

Mithun Husbandry and Production



A Dhali

B Prakash

A Mech

D T Pal

C Rajkhowa



National Research Centre on Mithun
Indian Council of Agricultural Research
Jharnapani, Medziphema, Nagaland - 797 106



Mithun Husbandry and Production

A. Dhali, Ph.D

Livestock Production and Management
NRC Mithun, Nagaland

B. Prakash, M.V.Sc

Animal Nutrition
NRC Mithun, Nagaland

A. Mech, Ph.D

Livestock Production and Management
NRC Mithun, Nagaland

D. T. Pal, Ph.D

Animal Nutrition
NIANP, Bangalore

C. Rajkhowa, Ph.D

Veterinary Parasitology
NRC Mithun, Nagaland

Preface

Animal husbandry remains an important component of the integrated agricultural practices in India since time immemorial. It plays an important role in food security and has a tremendous potential for employment generation for the millions of rural folks. This sector has been developed considerably over the last few decades and contributing 4.8 to 6.6% of the total GDP of our country. Nevertheless, per capita availability of different animal products is still below the level recommended by ICMR. Currently, one of the biggest challenges of our country is to ensure a steady supply of food and animal products to a huge population of more than 100 million. To meet the challenge, it is required to augment the productivity of conventional livestock species. Simultaneously it is needed as well to incorporate the unconventional livestock species like mithun into country's animal husbandry system.

Mithun is a magnificent domesticated bovine of the North-East hill region of India and neighbouring countries. The history of association of this animal with the ethnic and cultural life of tribal people of the North-East hill States is several hundred year old. However, the production potential of this species has been realized in recent years and found to be promising. Valuable information on the performance and management of mithun have been generated during last two decades, which are scattered in different literatures. In this book, we have tried to compile these information under the different chapters. The scientific and practical aspects of mithun husbandry and production including its origin, distribution, management, reproduction, nutrition and health have been described in an easy language for better understanding of its readers. We hope this book will be helpful for the farmers, students, researchers, academicians, veterinarians and planners in the field of animal husbandry in general and mithun in particular.

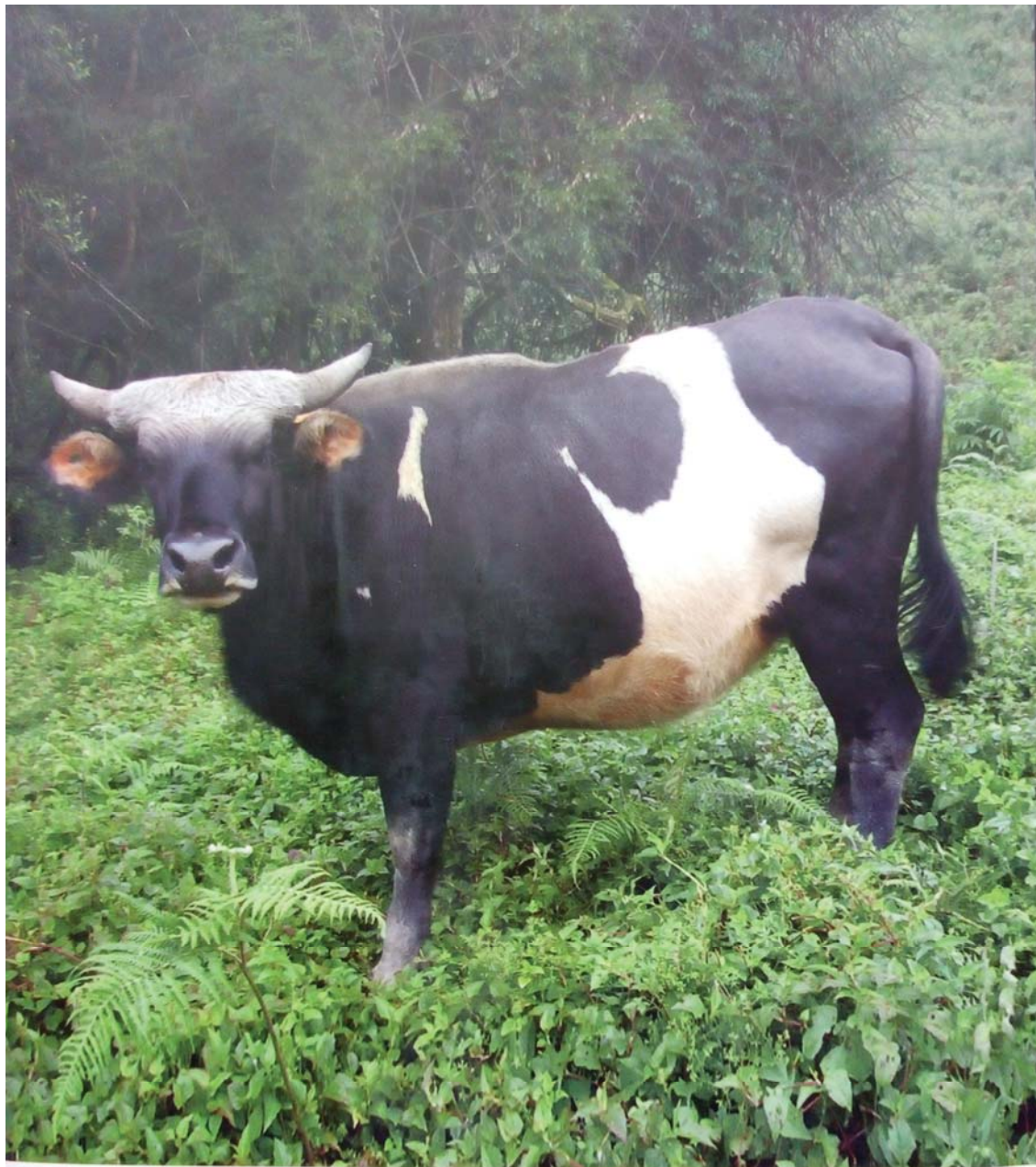
A. Dhali
B. Prakash
A. Mech
D. T. Pal
C. Rajkhowa

Contents

1. Prospect of Mithun Husbandry	1-6
Importance of animal husbandry	1-2
Prospect of mithun farming	2-5
2. Origin and Distribution of Mithun	7-12
Origin of mithun	7-8
Distribution and population of mithun	8-11
3. Physical and Physiological Characteristics of Mithun	13-20
Physical characteristics	13-15
Physiological characteristics	15-19
4. Production Potential of Mithun	21-34
Meat Production	21-23
Milk production	24-28
Leather production	29-30
Draught power	30-32
5. Housing Management in Mithun	35-44
Importance of housing management	35-37
Guidelines for constructing housing structures	37-39
Space requirements	39-40
Feeding and watering arrangements	40
Designs for model mithun shed	40-42
Essential hygienic practices to be followed in the mithun shed	42-43
6. Managemental Strategies for Different Categories of Mithun	45-60
Calf management	45-51

Heifer management	51-54
Pre and post calving management of mithun cows	54-57
Management of mithun bulls	57-59
7. Endocrinology of Mithun Estrous Cycle	61-80
Mithun estrous cycle	61-62
Expression of estrus behaviour in mithun	62-65
Endocrinology of mithun estrous cycle	65-69
Model for endocrine events and associated follicular development in mithun	69-70
Development and regression of CL during mithun estrous cycle	70-74
8. Preservation of Mithun Semen and Artificial Insemination	81-96
Current status of semen preservation and AI in mithun and gaur	82-83
Advantage and disadvantage of artificial insemination	83-84
Semen collection	84-87
Preservation of mithun semen at refrigeration temperature	87-89
Cryopreservation of mithun semen	90-92
Artificial insemination in mithun	93
9. Reproductive Management in Mithun	97-106
Management of breeding animals	98-103
Trouble-shooting of infertility problems	103-106
10. Feed and Fodder Resources for Mithun	107-130
Cultivable forage resources for mithun	109-115
Forest based foliages	115-124
Biomass Production	124-125
Potential for forage production	126
Scope for forage resource development	127
11. Propagation Techniques for Forest Based Feed Resources	131-144
Different methods of propagation	132-135
Propagation techniques and materials	136-143

12. Digestion Process and Rumen Ecosystem in Mithun	145-162
Digestion process in ruminants	146-148
Digestion and utilization of different nutrients in mithun	148-153
Ecology and fermentation pattern in mithun rumen	153-161
13. Evaluation and Utilization of Nutrients in Mithun	163-202
Evaluation of nutritive value of feeds	164-173
Feeding behaviour in mithun	173-174
Nutrient utilization in mithun	174-179
Level of incorporation of tree leaves in mithun ration	179-182
Feeding of urea treated paddy straw based feed block in mithun	182-188
Water requirement in mithun	188-192
Feed conversion efficiency for growth in mithun	192-194
Recommendations	194-196
14. Feeding Standards and Nutrient Requirements in Mithun	203-212
Feeding standard	203-206
Importance of Indian feeding standard	206-207
Nutrient requirements for mithun	207-210
Limitations of feeding standard	210-212
15. Health Management in Mithun	213-226
Diseases of mithun	213-220
Strategies for maintaining healthy mithun herd	221-222
Subject Index	227-230



Rs. 450/-